

P1127E-500

12.1" XGA TFT Expandable Industrial Touch Panel Computer with 7th/6th Gen Intel® Core™ i7/i5/i3, Celeron® & Pentium® Processor and PCI/PCIe Slot

Features

- 12.1" XGA TFT LCD display
- LGA1151 socket 7th/6th gen Intel® Core™ i7/i5/i3, Celeron® & Pentium® processors
- Intel® H110 chipset
- Less screw design for easy installation
- 4 USB 3.0, 2 USB 2.0 and 4 COM
- One PCIe x4 or one PCI slot
- Built-in speakers and optional Wi-Fi 802.11 b/g/n module
- Robust IP65 compliant aluminum front bezel
- Supports 5 OSD keys in front panel



▲ Side view



▲ Back view



Introduction

The P1127E-500 is a multimedia 12.1" touch panel PC for kiosk application. It has a fashionable mechanism design and industrial-grade material front bezel which can avoid damage from chemical corrosion. To meet the demands of multimedia application, the P1127E-500 is powered by a high performance LGA1151 socket 7th/6th generation Intel® Core™ processor with the Intel® H110 chipset. It features four COM ports, two Gigabit Ethernet and up to 32GB memory of dual-channel DDR4-2133 that delivers high computing capability for high performance-demanding applications. The industrial touch panel PC is most suitable for kiosk, factory and automation.

Expandable for 1 PCIe or 1 PCI

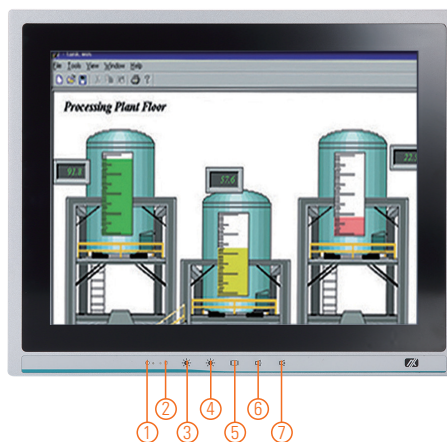
The P1127E-500 has one PCIe x4 or one PCI slot for expansion purpose. User can easily plug in standard half-size PCI or PCIe card based on any application needs.

Speaker and WLAN Antenna Supported

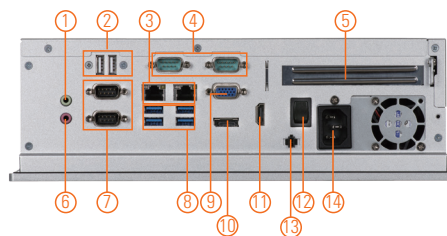
The P1127E-500 features built-in speakers for kiosk application to display multimedia content program. It also supports WLAN module antenna (optional) for wireless network connectivity.

Friendly Less Screw Design

The P1127E-500 is designed with easy of maintenance in mind. There are only three screws on the back chassis, so that technicians can quickly remove the system's back cover with minimum effort.



1. Display status LED
2. SATA status LED
3. Brightness -
4. Brightness +
5. Display monitor ON/OFF
6. Volume -
7. Volume +



1. 1 x Line-out
2. 2 x USB 2.0
3. 2 x LAN
4. 2 x RS-232
5. PCI or PCIe x4 Card expansion slot
6. 1 x Mic-in
7. 1 x RS-232/422/485 & 1 x RS-232
8. 4 x USB 3.0
9. 1 x VGA
10. 1 x DisplayPort
11. 1 x HDMI
12. Switch for power on/off
13. Remote switch button
14. AC plug

Specifications

| | | |
|-------------|---|---|
| Front Bezel | Aluminum w/ IP65/NEMA 4 rugged protection | |
| LCD Panel | Display Type | 12.1" XGA TFT LCD |
| | Brightness | 500 nits |
| | Resolution | 1024 x 768 pixels |
| | Viewing Angle | 160°/140° |
| Main System | CPU | LGA1151 socket 7th/6th gen Intel® Core™ i7/i5/i3, Celeron® & Pentium® processor |
| | Chipset | Intel® H110 |
| | System Memory | 2 x 288-pin DDR4-2133 Long-DIMM, up to 32GB |
| | BIOS | AMI UEFI BIOS |
| | Storage | 1 x 2.5" SATA HDD (9.5 mm height) |
| | Drive | N/A |
| | Watchdog Timer | 255 levels, 1 to 255 sec. |

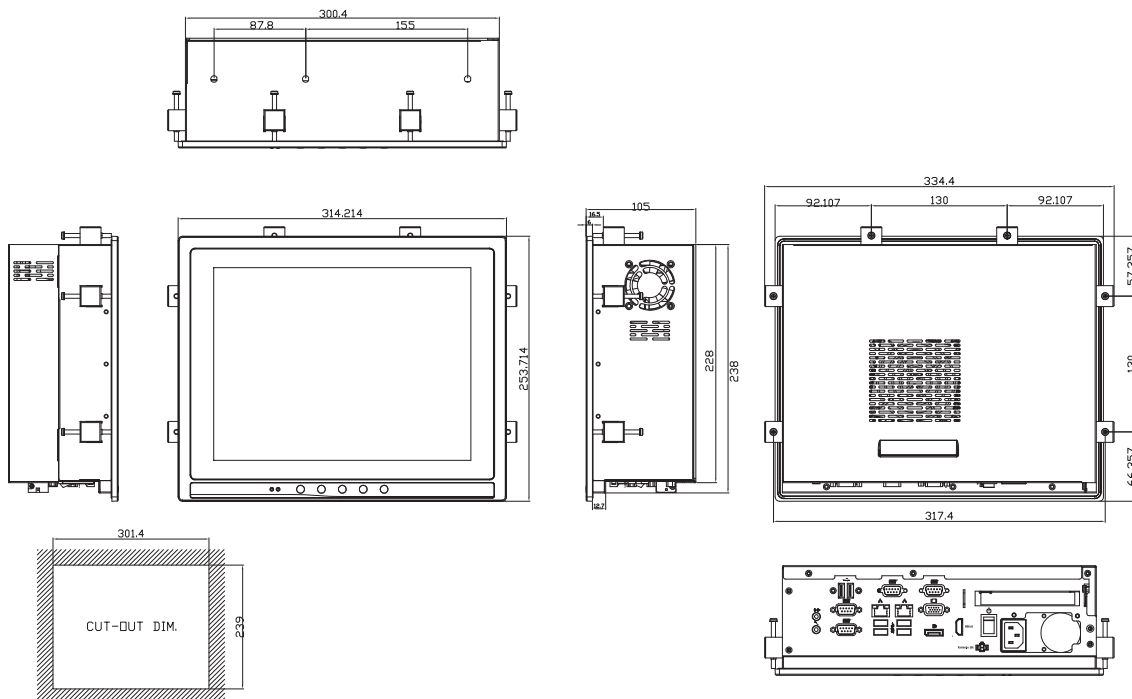
Specifications

| | |
|-----------------------|--|
| IO Connector | 3 x RS-232 1 x RS-232/422/485 1 x HDMI 1 x VGA 1 x DisplayPort 4 x USB 3.0 2 x USB 2.0 2 x 10/100/1000 Mbps Ethernet (Intel® i219-LM/i211-AT) 1 x Audio (Mic-in & Line-out) 1 x Remote Power Switch |
| TPM | N/A |
| Expansion Interface | 1 x PCIe x4 or 1 x PCI |
| Touchscreen | 5-wire resistive type Light transmission 79% 1 million activations (typical) at a single point |
| Power Supply | 100 to 240 VAC, 200W |
| Power Consumption | 121W |
| Dimensions | 314.2 mm (12.37") (W) x 105 mm (4.13") (D) x 253.7 mm (9.99") (H) |
| Packing Dimensions | 510 mm (20.08") (W) x 190 mm (7.48") (D) x 540 mm (21.26") (H) |
| Weight(net/gross) | 4.2 kg (9.26 lb)/6.3 kg (13.89 lb) |
| Operating temperature | 0°C to +50°C (+32°F to +122°F) |
| Relative humidity | 10% to 90% @ +40°C, non-considering |
| Operating vibration | 1.0G, 5 - 500 Hz, random |
| Certifications | CE |

Packing list

1 x P1127E-500
1 x Panel mount kit
1 x US power cord

Dimensions



Ordering Information

| | |
|---|--|
| P1127E-500-US w/PCIe x4 (P/N: E221127109) | 12.1" XGA expandable industrial touch panel computer with LGA1151 socket 7th/6th gen Intel® Core™ i7/i5/i3, Pentium® & Celeron® processor, resistive touch screen, PCIe x4 slot, 100 to 240 VAC with US power cord |
| P1127E-500-US w/PCI (P/N: E221127107) | 12.1" XGA expandable industrial touch panel computer with LGA1151 socket 7th/6th gen Intel® Core™ i7/i5/i3, Pentium® & Celeron® processor, resistive touch screen, PCI slot, 100 to 240 VAC with US power cord |

* Other configuration by request

* Specification and certifications may vary based on different requirements

Optional Accessories

| | |
|--------------|------------------------------------|
| Wi-Fi kit | |
| 881211270A0E | VESA & wall mount kit |
| E981604011 | ATC10 (VESA arm clamp type) |
| E981604012 | ATW10 (VESA arm wall mount) |
| E226171119 | Stand kit |
| 59403200B00E | Remote power switch cable (100 cm) |

Optional EOS Installation

| |
|----------------------------|
| Windows® 7 |
| Windows® 8.1 |
| Windows® 10 IoT Enterprise |

Optional OS Installation

| |
|------------------------|
| Skylake: Windows® 7 |
| Windows® 8.1 |
| Windows® 10 |
| Kaby Lake: Windows® 10 |