

GOT5103W-845

10.1" WXGA TFT Fanless Touch Panel Computer with Intel® Celeron® N3060 Processor or Intel® Pentium® N3710 Processor

Features

- 10.1" WXGA wide screen TFT LCD display with LED backlight
- Projected capacitive multi-touch
- Fanless design with Intel® Celeron® N3060 processor or Intel® Pentium® N3710 processor
- 1 mSATA and 1 half-slim SATA SSD (optional)
- 2 GbE LAN, 4 USB, 2 COM, 2W speakers and optional Mic-in
- IP65-rated front bezel and IPX1 full enclosure design
- Supports panel mount, wall mount, VESA arm and desktop stand
- External AT/ATX mode selection switch



Introduction

The GOT5103W-845 is a 10.1" WXGA fanless touch panel computer. In response to market demand, this panel computer is a cost effective solution. It adopts a modern, sleek and fanless design and is equipped with the Intel® Celeron® N3060 processor or Intel® Pentium® N3710 processor. For wireless network connection, the GOT5103W-845 offers two PCI Express Mini Card slots. By just installing a WLAN card and antennas, customers can have instant access to wireless LAN/GPRS/GSM/4G environments. Besides, it provides two types of power input: DC power with terminal block connector and AC power adapter with screw type connector.

Slim & Lightweight Design

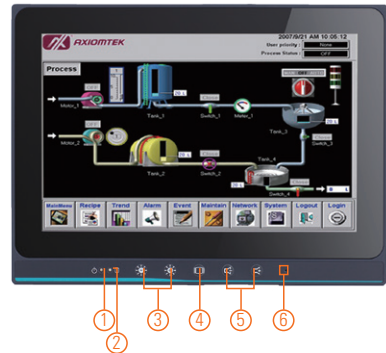
The GOT5103W-845 is slim and lightweight which make it fit for limited space installation.

Optional Internal WLAN Antenna

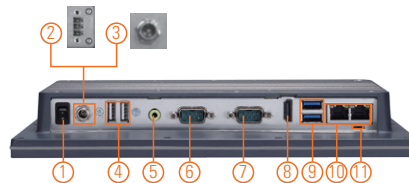
The GOT5103W-845 provides two PCI Express Mini Card slots and optional internal WLAN antennas for wireless network connections. Customers can use the GOT5103W-845 in wireless LAN/GPRS/GPS/4G environment.

Support Front Membrane Keys (optional)

The GOT5103W-845 has 5 membrane keys on the front panel which allows users to adjust the LCD on/off, LCD brightness and volume setting easily.



1. Power LED
2. HDD LED
3. Brightness adjust +/-
4. Display on/off
5. Volume adjust
6. Mic-in (optional)



1. Power switch (ATX)
2. Terminal block for DC power input or 3. Screw connector for AC power adapter
4. 2 x USB 2.0
5. 1 x Line-out
6. 1 x RS-232/422/485
7. 1 x RS-232
8. 1 x HDMI
9. 2 x USB 3.0
10. 2 x LAN
11. AT/ATX switch
12. Speaker

Specifications

Front Bezel	IP65, plastic front bezel	
LCD Panel	Display Type	10.1" WXGA TFT LCD with LED backlight
	Brightness (cd/m ²)	350 nits
	Resolution	1280 x 800
Main System	CPU	Intel® Celeron® processor N3060 2 cores (up to 2.48 GHz) Intel® Pentium® processor N3710 4 cores (up to 2.56 GHz)
	System Memory	1 x 204-pin DDR3L-1600 SO-DIMM, up to 8GB
	BIOS	AMI UEFI BIOS
	Storage	1 x Half-slim SATA SSD (only for GOT5103W-845-PCT-J) 1 x mSATA
	Watchdog Timer	255 levels, 0 to 255 sec.
	Onboard Graphics	Integrated Intel® HD GFX

Specifications

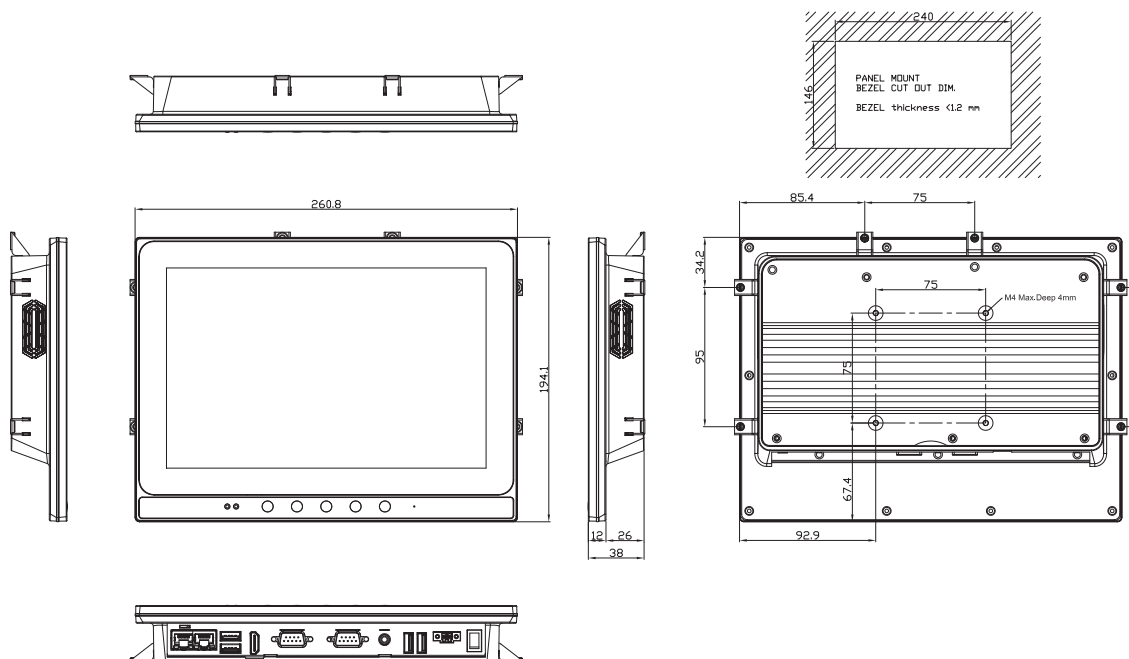
I/O Connector	1 x RS-232 1 x RS-232/422/485 1 x HDMI 1 x Switch for power on/off 1 x AT/ATX mode selection switch 2 x USB 2.0 2 x USB 3.0 1 x Audio (Line-out) 2 x 10/100/1000 Mbps Ethernet (Intel® i211-AT)
TPM	N/A
Expansion Interface	1 x Full-size PCI Express Mini Card with mSATA 1 x Full-size PCI Express Mini Card with SIM
Touchscreen	Projected capacitive multi-touch
Power Supply	AC version: 100 to 240 VAC-DC, 60W power adapter or DC version: 24 VDC with over current protection fuse
Power Consumption	40.32W
Dimensions	260.8 mm (10.27") (W) x 38 mm (1.50") (D) x 194.1 mm (7.65") (H)
Packing Dimensions	380 mm (14.96") (W) x 100 mm (3.94") (D) x 280 mm (11.02") (H)
Weight (net/gross)	1.08 kg (2.38 lb)/2.18 kg (4.8 lb)
Operating Temperature	0°C to +50°C (+32°F to +122°F) 0°C to +45°C (+32°F to +113°F) (GOT5103W-845 N3710)
Relative Humidity	20% to 90% @ 40°C; non-condensing
Operation Vibration	2G, 10 - 500Hz, random for SSD
Certifications	CE, FCC, UL60950-1

* W.T.: Wide Temperature. All W.T. supported products have to be sorted by Axiomtek.

Packing List

- 1 x GOT5103W-845
- 1 x Adapter (GOT5103W-845-J)
- 1 x Power cord (GOT5103W-845-J)
- 1 x Phoenix connector (GOT5103W-845 24 VDC)

Dimensions



Ordering Information

Standard	
GOT5103W-845-PCT-J (P/N: E225103100)	10.1" WXGA fanless touch panel computer with Intel® Celeron® processor N3060, projected capacitive multi-touch screen, AC-DC 60W power adapter (screw type connector) and EMI class A
GOT5103W-845-PCT-24VDC (P/N: E225103102)	10.1" WXGA fanless touch panel computer with Intel® Celeron® processor N3060, projected capacitive multi-touch screen and 24 VDC terminal block connector
GOT5103W-845-PCT-J N3710 (P/N: E225103114)	10.1" WXGA fanless touch panel computer with Intel® Pentium® processor N3710, projected capacitive multi-touch screen, AC-DC 60W power adapter (screw type connector) and EMI class A
GOT5103W-845-PCT-24VDC N3710 (P/N: E225103115)	10.1" WXGA fanless touch panel computer with Intel® Pentium® processor N3710, projected capacitive multi-touch screen and 24 VDC terminal block connector

* Other configuration by request

* Specification and certifications may vary based on different requirements

Optional Accessories

Wi-Fi + Bluetooth kit	
RFID kit	
881251030AOE	Panel mount kit
8812B1070AOE	Wall mount kit
E226171119	Stand kit
Half slim SSD kit SFP (AC Version only)	

Optional EOS Installation

WES7	
WES8 (64-bit)	
Windows® 10 IoT Enterprise (64bit)	

Optional OS Installation

Windows® 7	
Windows® 8.1 (64-bit)	
Windows® 10	