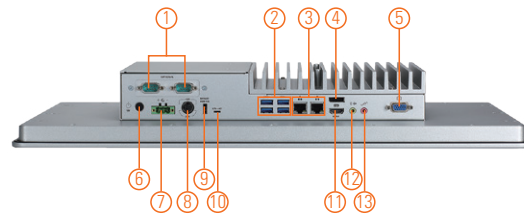
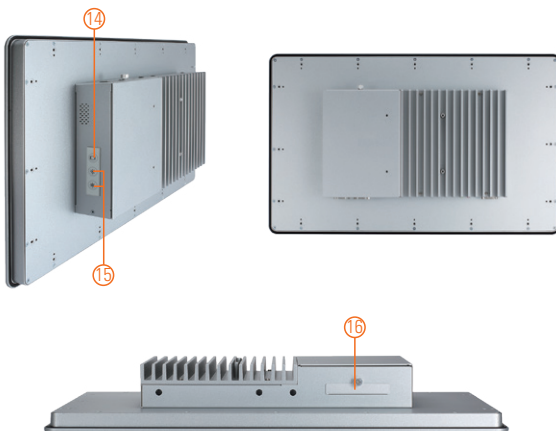
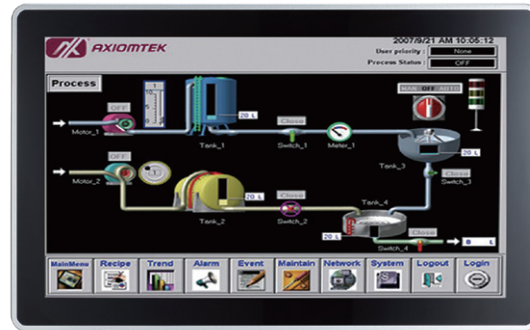


GOT321W-502-PCT

21.5" FHD TFT Multi-touch Panel Computer with 7th/6th Gen Intel® Core™ i7/i5/i3 Processor

Features

- 21.5" FHD 10-point multi-touch projected capacitive widescreen
- LGA1151 socket 7th/6th gen Intel® Core™ i7/i5/i3, Celeron® & Pentium® processor
- Intel® H110 chipset
- 4 USB 3.0 and 2 COM
- 2.5" SATA HDD and mSATA
- WLAN module & antenna (optional)
- IP65-rated front bezel
- Supports panel mount and VESA mount (VESA arm/desktop stand/wall mount optional)
- Built-in speakers and swappable hard drive design



- | | | |
|--------------------|--------------------------------------|---------------------------|
| 1. 2 x COM (cable) | 6. Power button (ATX) | 11. 1 x HDMI |
| 2. 4 x USB 3.0 | 7. Terminal block for DC power input | 12. 1 x Line-out |
| 3. 2 x LAN | 8. Power input for adapter | 13. 1 x Mic-in |
| 4. 1 x DisplayPort | 9. Remote power switch | 14. Backlight switch |
| 5. 1 x VGA | 10. AT/ATX selectable switch | 15. Brightness adjust +/- |
| | | 16. Swappable HDD |



Introduction

The GOT321W-502 is a 21.5" fanless touch panel PC for kiosk and automation applications. It has a fashionable mechanism design and industrial-grade IP61-rated front bezel which can avoid damage from chemical corrosion. To meet the demands of multimedia application, the GOT321W-502 is powered by the high performance LGA1151 socket 7th/6th gen Intel® Core™ processor with the Intel® H110 chipset. It features two COM ports, two Gigabit Ethernet and up to 32GB memory of dual-channel DDR4-2400. The industrial touch panel PC is suitable for kiosk and factory automation.

Swappable Hard Drive Design

The GOT321W-502 is equipped with an easy-swappable 2.5" HDD for extensive storage needs.

Speaker and WLAN Module Supported

The GOT321W-502 is equipped with built-in speakers for multimedia applications. It also supports WLAN module and antennas (optional) for wireless network connectivity.

Specifications

Front Bezel	Aluminum w/ IP65/NEMA 4 rugged protection	
LCD Panel	Display Type	21.5" FHD TFT
	Brightness	250 nits
	Resolution	1920 x 1080 pixels
	Viewing Angle	178°/178°
Main System	CPU	LGA1151 socket 7/6th gen Intel® Core™ i7/i5/i3, Celeron® & Pentium® processor
	Chipset	Intel® H110
	System Memory	2 x 260-pin DDR4-2400 SO-DIMM, up to 32GB
	BIOS	AMI UEFI BIOS
	Storage	1 x 2.5" SATA HDD (9.5 mm height)
	Drive	N/A
	Watchdog Timer	255 levels, 1 to 255 sec.

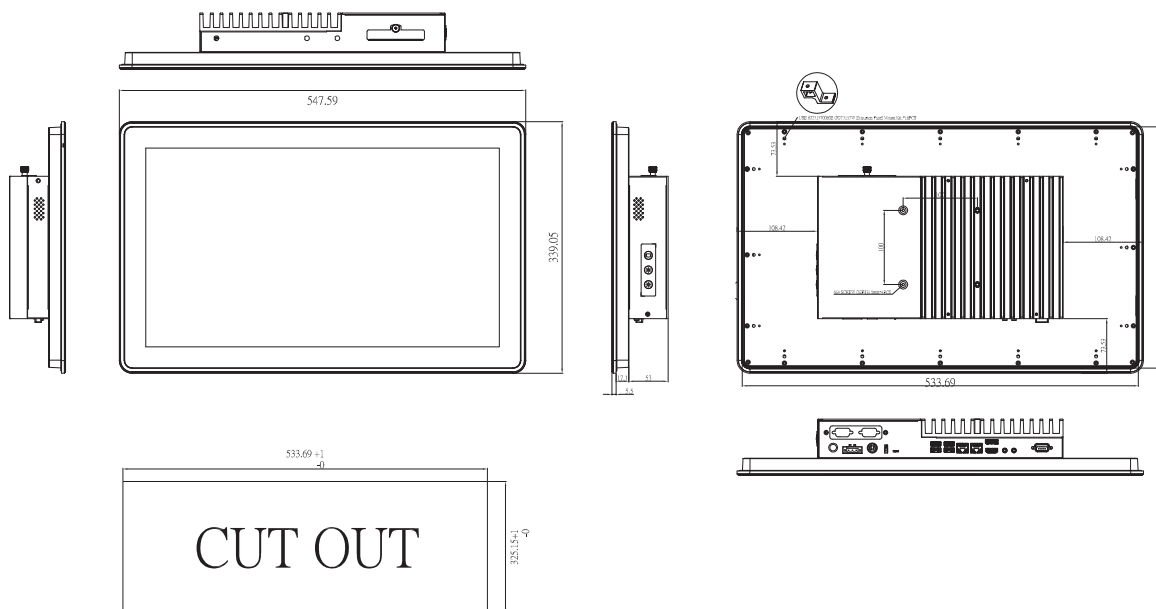
Specifications

IO Connector	2 x RS-232/422/485 1 x HDMI v1.4 1 x VGA (up to 1920 x 1200 60Hz) 1 x DisplayPort v1.2 (DP++) 4 x USB 3.0 2 x 10/100/1000 Mbps Ethernet (Intel® i219-V & i211-AT) 1 x Audio (Mic-in & Line-out)
TPM	N/A
Expansion Interface	1 x Half-size PCI Express Mini Card slot with mPCIe 1 1 x Full-size PCI Express Mini Card slot with mSATA or mPCIe 2
Touchscreen	10-point projected capacitive multi-touch 5-wire flat resistive touch
Power Supply	DC terminal block: +12V/+19V/+24V AC adapter: 19V, 6.32A
Power Consumption	105W
Dimensions	547.59 mm (21.56") (W) x 339.05 mm (13.49") x 75.6 mm (2.98")
Packing Dimensions	720 mm (28.34") (W) x 210 mm (8.27") (D) x 550 mm (2.17") (H)
Weight (net/gross)	8.4 kg (18.5 lb)/11.3 kg (24.9 lb)
Operating Temperature	0°C to +45°C (+32°F to +113°F)
Relative Humidity	10% to 90% @ +40°C, non-considering
Operating Vibration	1.0G, 5 - 500Hz, random
Certifications	CE

Packing List

- 1 x GOT321W-502
- 1 x Driver CD
- 1 x Phoenix connector
- 1 x Panel mount kit (by model)
- 1 x Adapter (by model)

Dimensions



Ordering Information

GOT321W-502-PCT With Adapter and Panel Mount Kit	21.5" FHD TFT fanless multi-touch panel computer with LGA1151 socket 7th/6th gen Intel® Core™, Pentium®, Celeron® processor, 10-point projected capacitive multi-touch screen and 12/19/24 VDC terminal block connector
GOT321W-502-PCT-DC W/O Adapter and Panel Mount Kit	21.5" FHD TFT fanless multi-touch panel computer with LGA1151 socket 7th/6th gen Intel® Core™, Pentium®, Celeron® processor, 10-point projected capacitive multi-touch screen and 12/19/24 VDC terminal block connector
GOT321W-502-FR With Adapter and Panel Mount Kit	21.5" FHD TFT fanless touch panel computer with LGA1151 socket 7th/6th gen Intel® Core™, Pentium®, Celeron® processor, 5-wire flat resistive touch screen and 12/19/24 VDC terminal block connector

* Specification and certifications are based on requirements and may vary.

Optional Accessories

Wi-Fi	
82231770050E	GOT3177T-834 wall mount kit
50904D24010E	AC adapter 120W 19V/6.32A,FSP120-ABAN3
82262170000E	P6217 panel mount kit SFP

Optional EOS Installation

Windows® 7	
Windows® 8.1	
Windows® 10 IoT Enterprise	

Optional OS Installation

Skylake: Windows® 7	
Windows® 8.1	
Windows® 10	
Kaby Lake: Windows® 10	