



Bluetooth handle instructions

SH42/SH52/SH62 User Manual



8 rue du Colonel Chambonnet
69500 BRON - FRANCE
04 72 14 18 00
info@ip-systemes.fr
www.ip-systemes.com

Contents

I . Product Introduction	1
1. Model introduction	1
2. Appearance description	2
II. Installation Guide	3
III. Scan application	5
1. Android System	5
2. Windows System	7
2.1 Connect the handle	7
2.2 Install AppService program	8
2.3 Install KeybroadMonitor	12
2.4 Precautions	15
IV. Frequently Asked Question	15

I . Product Introduction

1. Model introduction

There are three types of Bluetooth handles: SH42, SH52, SH62, which are used with handheld devices of 42, 52 and 62 respectively. Their grips are common, only the tray size is different. As follows:



SH42



SH52



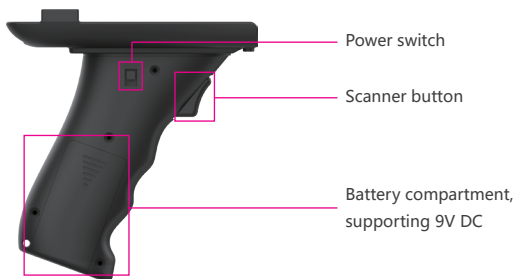
SH62

2. Appearance description

2.1 Button definition:

(1)Power switch: Turn on means shut pistol grip, down means open it.

(2)Scanner button: when the pistol grip connected with machine successfully, press scanner button can scan 1D/2D barcode.

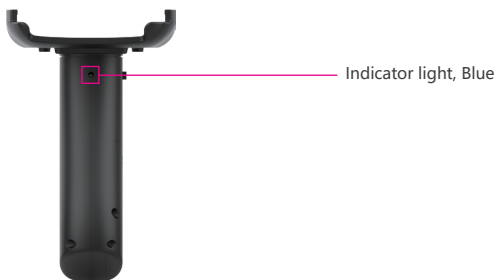


2.2 Light definition

(1)LED light off means pistol grip is shut

(2)LED light on means pistol grip is successfully connected with machine.

(3)LED light flicker at 1 second interval means pistol grip is open but is not connected successfully.



II. Installation guide

1. Install the device on the Bluetooth handle.



2. Align the two holes on the top of the Bluetooth handle with the two holes next to the battery lock on the back of the device.



3. Tighten the screws, installation is complete.



4. The installation process of SH52 and SH62 is the same as above.

SH52:



SH62:

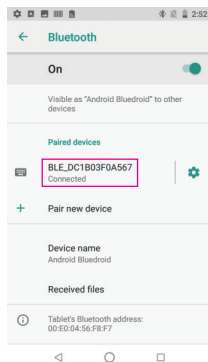
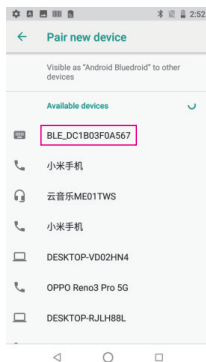
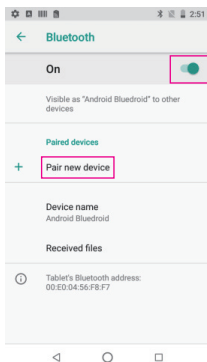


III. Scan application

1. Android System

1.1 Connect the handle

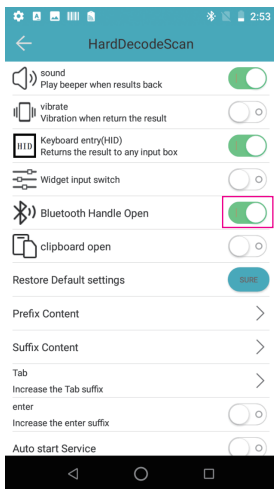
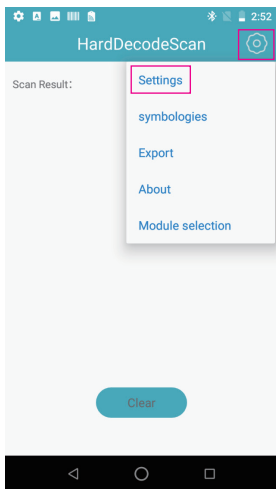
Open setting>Connected devices>Bluetooth, click the upper right corner to turn on Bluetooth. Choose pair new device, find the Bluetooth device starting with "BLE_", and click Connect.



Connection succeeded.

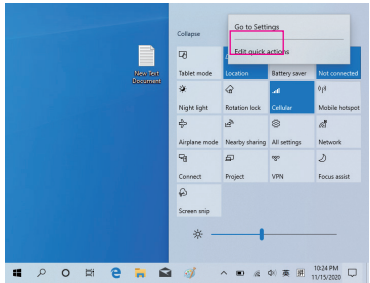
1.2 Scanner settings

Open the gear icon in the upper right corner to enter the settings. Then turn on the Bluetooth handle opening button.

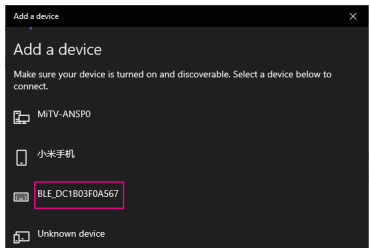


2. Windows System

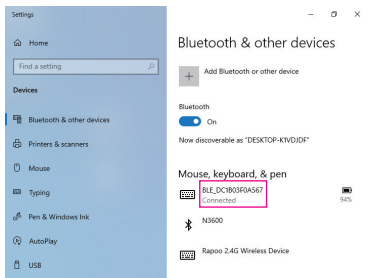
2.1 Connect the handle
Open Bluetooth settings in the taskbar.



Click Add Bluetooth or other device, find the Bluetooth device starting with "BLE_", and connect.



Connection succeeded.



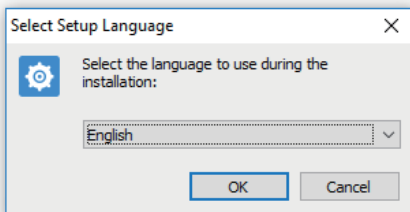
2.2 Install AppService program

2.2.1 Installation

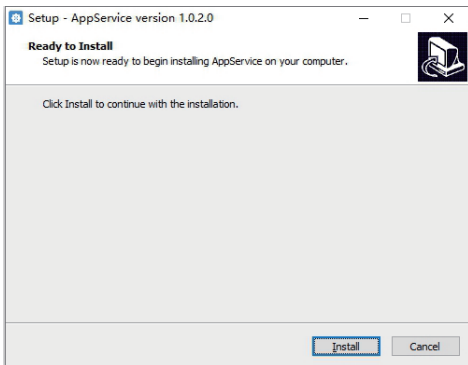
Double-click “AppService_setup_’ DeviceName’ _’ Version’ .exe” (such as AppService_setup_I62H_V1.0.2.0), choose OK to install the Windows service.

As shown below:

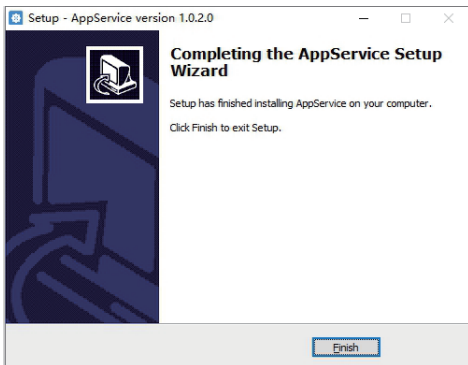
Name	Date modified	Type
 AppService_setup_I62H_V1.0.2.0	7/21/2020 12:58 AM	Application



Select "Install" to continue the installation.



Select "Finish" to complete the installation.



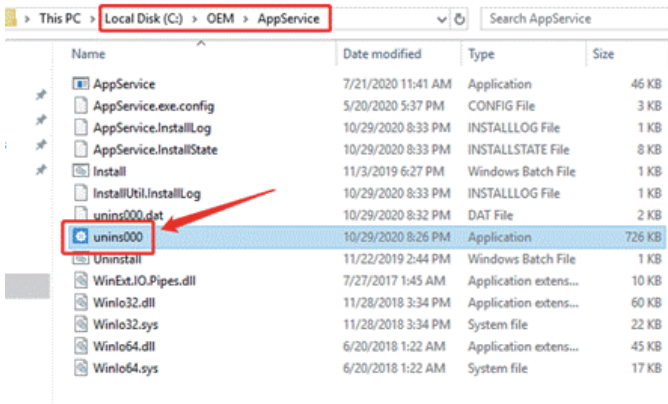
Please reboot your device so that AppService can run normally.

2.2.2 Uninstall

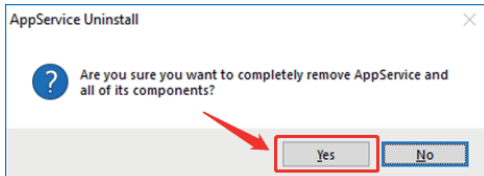
Unins000.exe can be found in the C:\OEM\AppService path.

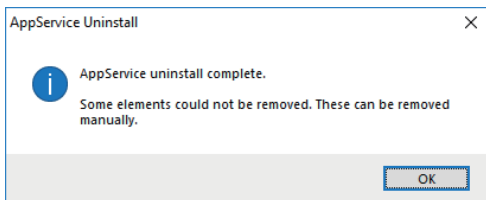
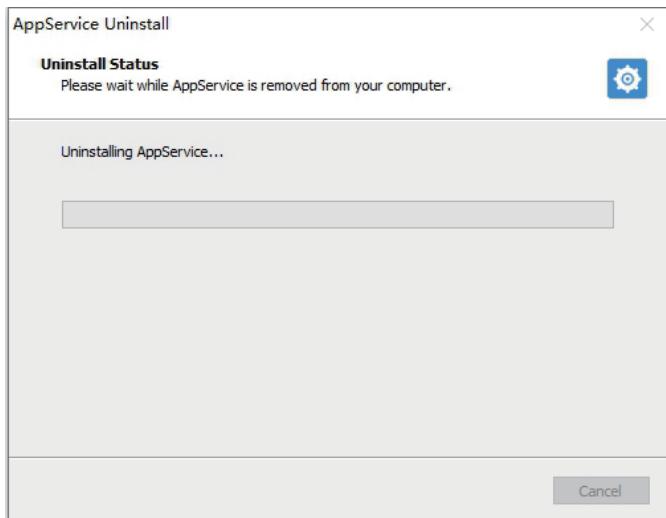
Double-click unins000.exe to uninstall AppService.

As shown below:



Select "Yes".





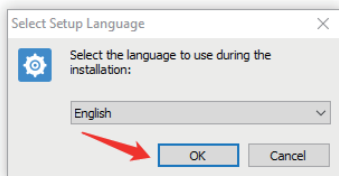
So far uninstalling AppService has been completed.

2.3 Install KeybroadMonitor

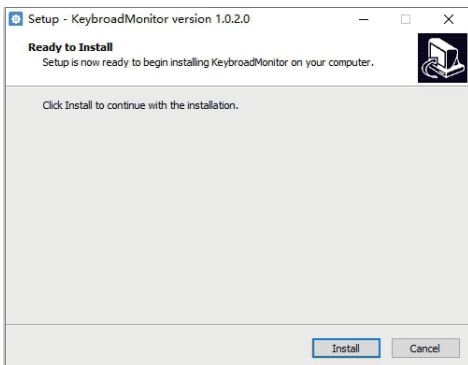
Double-click "KeybroadMonitor_setup_V1.0.2.0.exe" to install KeybroadMonitor tool.

As shown below:

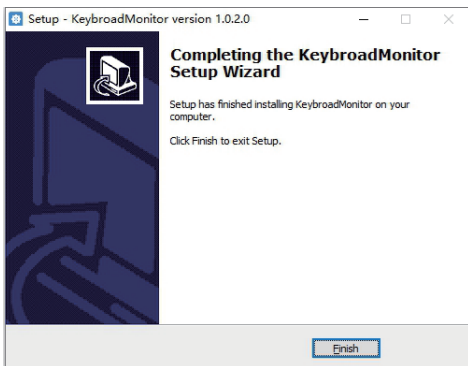
Name	Date modified	Type	Size
Demo源码	10/29/2020 8:24 PM	File folder	
KeybroadMonitor_setup_V1.0.2.0	7/22/2020 1:43 AM	Application	501 KB



Click "Install" to continue the installation.



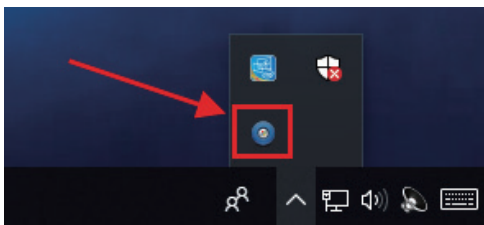
Click "Finish" to complete the installation.



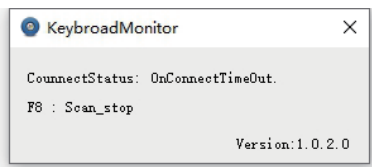
Reboot your device.

KeybroadMonitor runs automatically after booting. After rebooting, you can see a running icon in the taskbar.

As shown below:

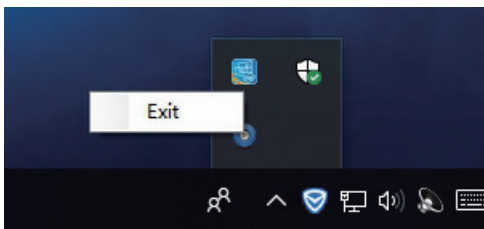


Double-click this icon to open the KeybroadMonitor display interface:



To exit KeybroadMonitor, right-click on the icon and select Exit to exit.

As shown below:



2.4 Precautions

2.4.1 KeybroadMonitor relies on Appservice service. If the Appservice is not installed, then KeybroadMonitor cannot work properly.

2.4.2 After installing KeybroadMonitor, you need to restart your computer to run normally.

IV. Frequently Asked Question

1. If the handle has been paired, then need to connect another machine, the following operations is needed:

1.1 Press and hold the scan key while turning on the power switch;

1.2 When the power indicator on the handle flashes at 10S or so, the indicator light will be converted to flash at 1s, indicating previous paired device has been cleared successfully;

1.3 At the moment you can release the scan button, search the Bluetooth device to connected the corresponding machine.

2. If there are both hard and soft decoding apps on the Android system, they cannot be opened at the same time, otherwise they will not work normally.

3. The principle of the Bluetooth handle is to simulate keyboard input, and pressing the scan key will trigger the F8 key on the keyboard. If the Bluetooth handle is set correctly but still cannot be used. You can connect the keyboard and press F8 to verify whether the scan can be triggered normally.