

EM-X15T

Fully Rugged Notebook



Performance Upgrade



Windows



IP65



GPS



Camera



Dual-battery



Fingerprint



NFC



4G/5G



WiFi



Bluetooth

Performance

- 11th Gen® Intel® Core™ i5/i7 processor
- New Intel Iris® Xe core graphics card
- Support Windows 10 OS, Optional Windows 11 OS

Communication

- High speed Wi-Fi 6
- Support M.2 interface 5G/4G selection
- Bluetooth 5.1 for higher transfer speeds

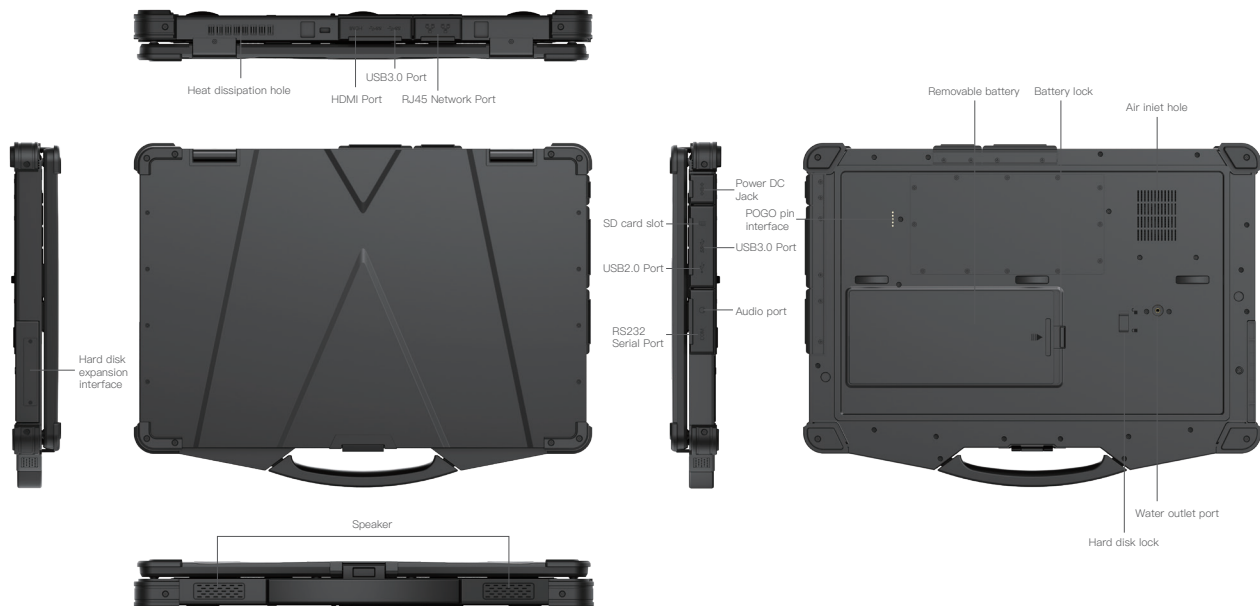
Function

- 15.6-inch FHD
- Rich interfaces and extended function can meet various needs
- 6300mAh/7.4V+1750mAh/7.4V dual battery, Large battery support hot-swappable

Reliability

- Press fingerprint identification
- IP65 high protection level, 1.22m fall resistant
- In accordance with MIL-STD-810G

Product Six Views



Specification Parameter

Basic parameters	
Dimension	407 x 305.8 x 45.5mm
Weight	device unit 3300g
Device Color	black
LCD	15.6 inch FHD 16:9, 1920x1080, 700nits
Touch Panel	NA
Camera	Front 2.0MP
I/O	HDMI x 1, POGO 5pin x 1, USB 2.0 Type-A x 1, USB 3.0 Type-A x 3, SIM Card x 1, SD Card x 1, DB9 RS232 x 1, RJ45 x 2, Φ3.5mm standard earphone jack x 1, DC 19V 3.42A x 1 Passenger transfer card PCIE X4 slot or HDD x 1 (Optional)
Power	AC100V ~ 240V, Output DC 19V/3.42A/65W

Battery (Built-in)	
Capacity	7.4V/1750mAh
Type	Built in Li_polyment,battery loadable
Endurance	0.5hrs (Default 50% volume, default 200 nit, Play 720P HD video)

Battery (Hot-swappable)	
Capacity	7.4V/6300mAh
Type	Li_polyment, removeable battery
Endurance	7hrs (50% volume sounds, 50% screen brightness, 1080P HD video display by default)

Performance parameter	
CPU	Intel® Core™ i5-1135G7/i7-1165G7
OS	Windows 10, Optional Windows 11
RAM	8GB/16GB
ROM	256GB/512GB/1TB

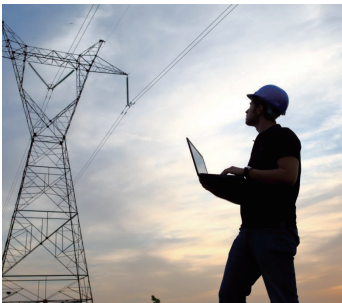
Communication	
WIFI	WiFi 6, 802.11a,b,d,e,g,h,i,k,n,r,u,v,w,ac,ax
Bluetooth	BT5.1 Transmission distance: 10m
2G/3G/4G (Optional)	LTE-FDD: B1/B3/B5/B7/B8/B20 LTE-TDD: B40 WCDMA: B1/B5/B8 GSM: B3/B8
5G (Optional)	5G NR: n1/n2/n3/n5/n7/n8/n12/n20/n25/n28/ n38/n40/n41/n48*/ n66/n71/n77/n78/n79 LTE-FDD: B1/B2/B3/B4/B5/B7/B8/B12(B17)/B13/B14/ B18/B19/B20/B25/B26/B28/B29/B30/B32/B66/B71 LTE-TDD: B34/B38/B39/B40/B41/B42/B43/B48 LAA: B46 WCDMA: B1/B2/B3/B4/B5/B6/B8/B19
GNSS	Support GPS, Optional GPS+Beidou

Reliability	
Operate Temperature	-20 °C ~ 60 °C
Store Temperature	-30 °C ~ 70 °C
Humidity	95% Non-Condensing
Rugged Feature	IP65 certified, MIL-STD-810G certified
Drop Height	1.22m

Data Collection	
Fingerprint	SPI fingerprint (power on login)
NFC	Optional, 13.56MHz, Card reading distance: 4cm

Application Range

Various modules and accessories can be selected to meet customers' application in various industries.



Power Maintenance



Equipment Testing



Automobile Manufacturing



Energy Industry