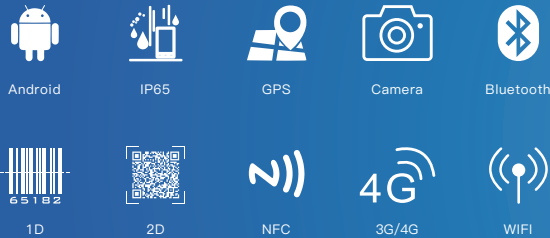


5 inch Rugged Handheld



Functions

- Support for Android 9.0 system
- Optional 3G/4G all network communication, WiFi, Bluetooth and other communication modes
- Equipped with 4000mAh large capacity battery, the machine has a endurance of 4 hours
- IP65 high protection level, in accordance with MIL-STD-810G
- Support GPS, GLONASS, more accurate positioning
- Equipped with 13 million pixel auto focus camera, easy to collect images and video information
- Support 1D/2D, NFC and other functional modules to meet the application needs of multiple industries

Product Six Views



Optional Accessories



Specification Parameter

Basic parameters	
Dimension	147.7 x 74 x 19mm
Weight	device unit 220g
Device Color	black
LCD	5 inch IPS 16:9, 1280x720, 330nits
Touch Panel	5 point G+F capacitive touch screen Corning® Gorilla® Glass
Camera	Rear 13MP
I/O	TF Card x 1 SIM Card x 1 USB Type-C x 1 8Pin back shell x 1, 2Pin machine button x 1 Φ3.5mm standard earphone jack x 1
Power	AC100V ~ 240V, 50Hz/60Hz, Output DC 5V/2A
Communication	
WIFI	WiFi 802.11 a/b/g/n/ac (2.4G+5G)
Bluetooth	BT4.0
3G/4G (Optional)	CMCC 4M: LTE B1/B3/B5/B7/B8/B20/B38/B39/B40/B41 WCDMA B1/B2/B5/B8 GSM B2/B3/B5/B8
GNSS	Built-in GPS+Glonass

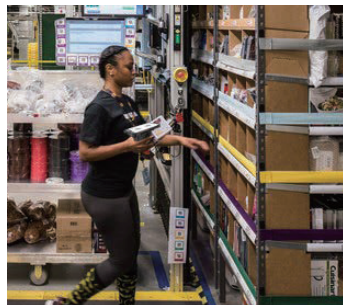
Performance parameter	
CPU	Qualcomm(OCTA Core), 2.0GHz
OS	Android 9.0
RAM	4GB
ROM	64GB
Battery	
Capacity	3.85V/4000mAh
Type	Built-in Lithium-ion polymer battery
Endurance	4.5hrs (default 50% volumn, default 200 nit, play 1080P HD video)
Reliability	
Operate Temperature	-10 °C ~ 55 °C
Store Temperature	-20 °C ~ 60 °C
Humidity	95% Non-Condensing
Rugged Feature	IP65 certified, MIL-STD-810G certified
Drop Height	1.2m
Data Collection	
NFC	Built-in, ISO/IEC 14443A/B
1D	Support Zebra SE4710, Optional EM03
2D	

Application Range

The handheld terminal with RFID UHF technology is widely used, which can meet the application in retail, storage material management, finance, express delivery, medical and other fields.



Warehouse Management



Market



Express Industry



Mobile Payment