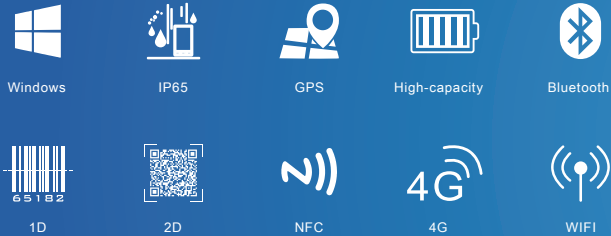


6 inch Rugged Handheld



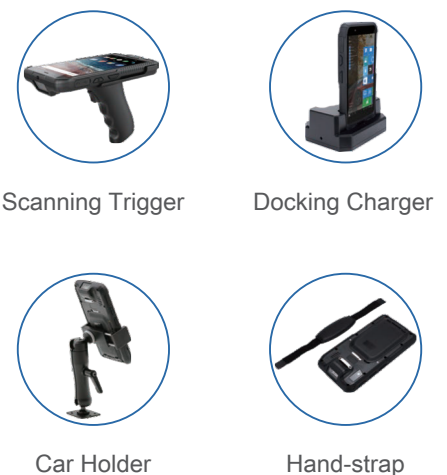
Functions

- Support for Windows 10 system
- Optional 4G all network communication, WiFi, Bluetooth and other communication modes
- Equipped with 5000mAh large capacity wide temperature battery, the machine has a endurance of 6-8 hours
- IP65 high protection level, in accordance with MIL-STD-810G
- Support GPS, more accurate positioning
- Equipped with front 2 million and rear 5 million pixel auto focus camera
- Support 1D / 2D, NFC and other functional modules to meet the application needs of multiple industries

Product Six Views



Optional Accessories



Specification Parameter

Basic parameters	
Dimension	185 x 94.6 x 28.5mm
Weight	device unit 380g
Device Color	black
LCD	5.98inch IPS 16:9, 1280x720, 430nits
Touch Panel	5 point G+FF capacitive touch screen Corning® Gorilla® Glass
Camera	Front 2.0MP Rear 5.0MP
I/O	USB Type-C x 1, SIM Card x 1, TF Card x 1, 4Pin machine button x 1 Φ3.5mm standard earphone jack x 1
Power	AC100V ~ 240V, 50Hz/60Hz, Output DC 5V/3A
Communication	
WIFI	WiFi 802.11 a/b/g/n/ac (2.4G+5.8G)
Bluetooth	BT4.2
3G/4G (Optional)	EC25-EC LTE FDD: B1/B3/B7/B8/B20/B28A WCDMA: B1/B8 GSM: B3/B8
GNSS	Built-in GPS

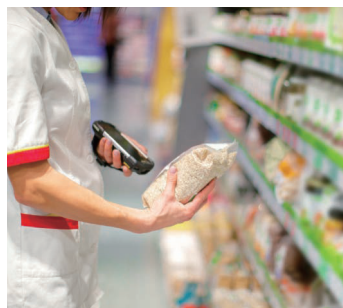
Performance parameter	
CPU	Intel Atom x5 Z8350
OS	Windows 10
RAM	4GB
ROM	64GB
Battery	
Capacity	3.7V/5000mAh
Type	Li_polyment, removeable battery
Endurance	6hrs (Default 50% volumn, Default 200 lumens brightness, Play 720P video)
Reliability	
Operate Temperature	-10 °C ~ 50 °C
Store Temperature	-20 °C ~ 60 °C
Humidity	95% Non-Condensing
Rugged Feature	IP65 certified, MIL-STD-810G certified
Drop Height	1.2m
Data Collection	
NFC	Optional, 13.56MHz, ISO/IEC 14443A/B, ISO/IEC 15693, ISO/IEC 18092
1D	Optional, Honeywell N4313
2D	Optional, EM80

Application Range

The handheld terminal with RFID UHF technology is widely used, which can meet the application in retail, storage material management, finance, express delivery, medical and other fields.



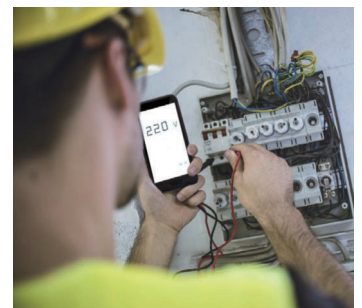
Warehouse Management



Market



Express Industry



Electric Power Inspection