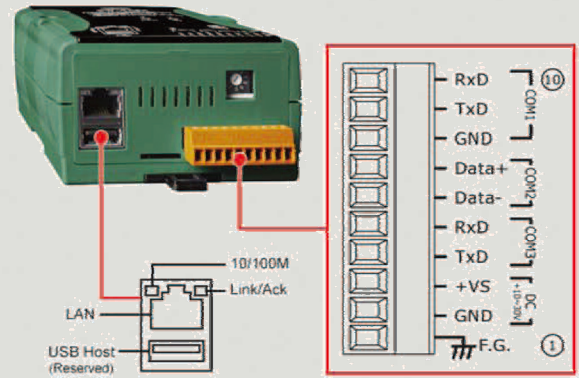




## BACnet/IP to Modbus TCP Gateway



**GW-5493**



**Pin Assignment**

GW-5493 is a fully configurable universal BACnet/IP (Server) to Modbus TCP (Client) gateway which is used to make Modbus TCP devices accessible on a BACnet network. The GW-5493 contains a large number of BACnet objects (AI, AO, AV, BI, BO, BV, MSI, MSO, MSV) gives you flexibility in mapping Modbus TCP registers to any combination of BACnet objects. Multiple BIBBs (DS-RP-B, DS-RPM-B, DS-WP-B, DS-WPM, DS-COV-B...etc.) are supported. All the data transfer is configurable using a standard Web browser.

### Features

- Read/Write any standard Modbus register via BACnet
- Fully Compliant with BACnet/IP Server
- Fully User Configurable Modbus TCP Client
- Modbus register mapping configured via web interface

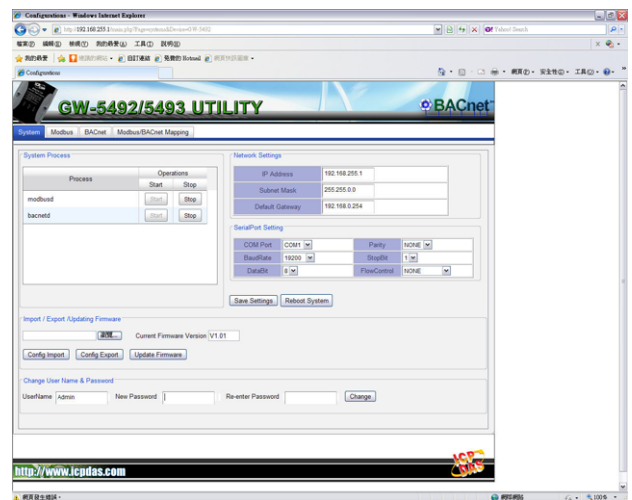
### BACnet Support

Objects	Binary Input / Binary Output / Binary Value / Analog Input / Analog Output / Analog Value / Multi-state Input / Multi-state Output / Multi-state Value / Device
BIBBs	DS-RP-B, DS-RPM-B, DS-WP-B, DS-WPM-B, DS-COV-B, DM-DDB-B, DM-DOB-B, DM-DCC-B, DM-TS-B, DM-UTC-B, DM-RD-B

### Modbus RTU Support

Function Code	0x01, 0x02, 0x03, 0x04, 0x05, 0x06, 0x10, 0x0F
---------------	---

### Utility Features



- Configured via standard web browser
- Provide Modbus network configuration interface
- Provide BACnet configuration interface



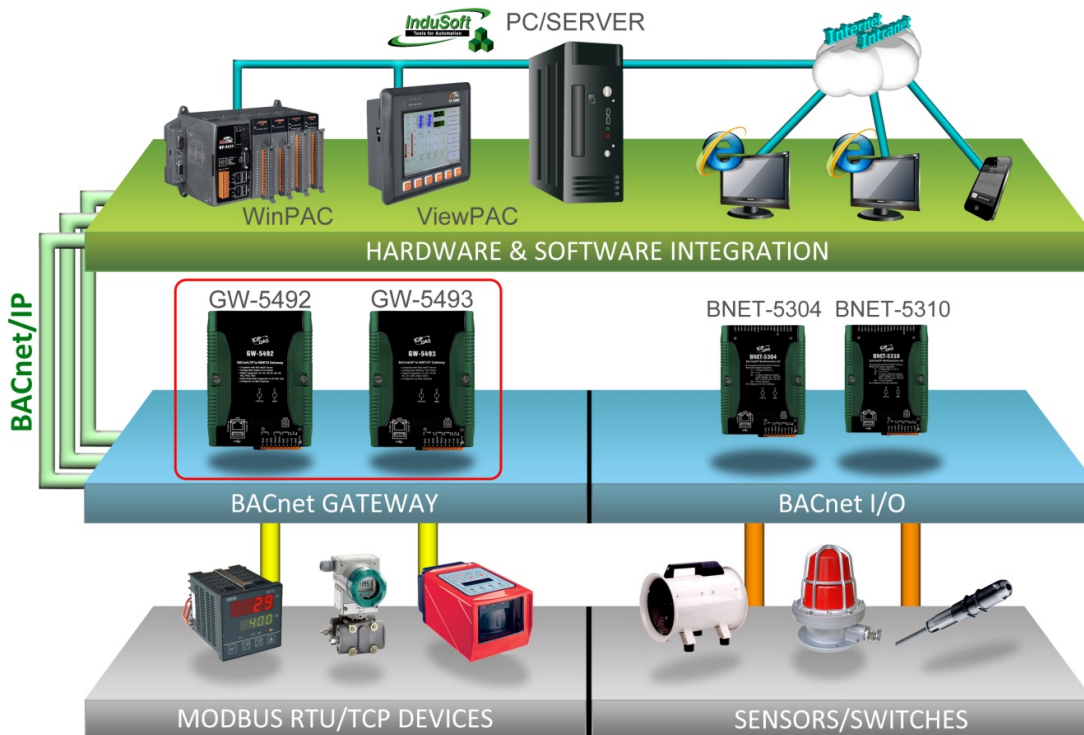
**IP SYSTEMES**  
 8 rue du Colonel Chambonnet – BP67  
 69672 BRON Cedex  
 Tel. : 04 72 14 18 00  
 Fax : 04 72 14 18 01  
[www.ip-systemes.com](http://www.ip-systemes.com) – [info@ip-systemes.fr](mailto:info@ip-systemes.fr)



## Hardware Specifications

System	
CPU	32-bit
SDRAM	64 MB
Flash	64 MB
EEPROM	16 KB
Communication Ports	
COM1	RS-232 (Rx/D, Tx/D, and GND); Non-isolation
Ethernet	10/100Base-TX Ethernet Controller
Protocol	
Modbus	Modbus TCP Client
BACnet	BACnet/IP Server
BACnet Objects	BI, BO, BV, AI, AO, AV, MSI, MSO, MSV (Maximum: 200 each)
BIBBs	DS-RP-B, DS-RPM-B, DS-WP-B, DS-WPM-B, DS-COV-B, DM-DDB-B, DM-DOB-B, DM-DCC-B, DM-TS-B, DM-UTC-B, DM-RD-B
Mechanical	
Dimensions	91mm x 132mm x 52mm(W x L x H)
Installation	DIN-Rail
Environment	
Operating Temp.	-25 ~ +75 °C
Storage Temp.	-30 ~ +85 °C
Humidity	5 ~ 90% RH, non-condensing
Power	
Power Input Range	+10V to +30VDC
Isolation	1 kV
Consumption	4.8 W (0.2 A @ 24 VDC)

## Applications



## Ordering Information

**GW-5493**

BACnet/IP to Modbus TCP Gateway