



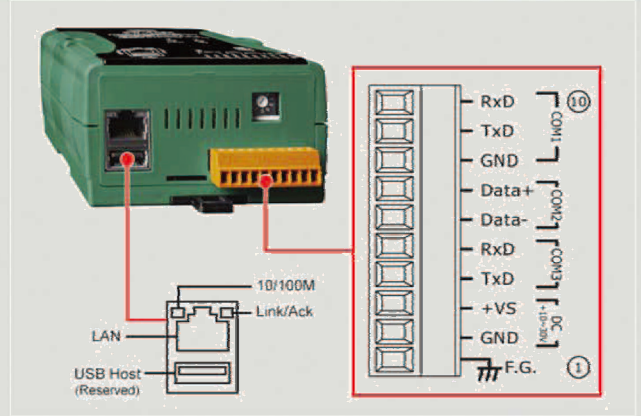
BACnet Series Products



BACnet/IP to Modbus RTU Gateway



GW-5492



Pin Assignment

GW-5492 is a fully configurable universal BACnet/IP (Server) to Modbus RTU (Master) gateway which is used to make Modbus RTU devices accessible on a BACnet network. The GW-5492 contains a large number of BACnet objects (AI, AO, AV, BI, BO, BV, MSI, MSO, MSV) gives you flexibility in mapping Modbus RTU registers to any combination of BACnet objects. Multiple BIBBs (DS-RP-B, DS-RPM-B, DS-WP-B, DS-WPM, DS-COV-B...etc.) are supported. All the data transfer is configurable using a standard Web browser.

Features

- Read/Write any standard Modbus register via BACnet
- Fully Compliant with BACnet/IP Server
- Fully User Configurable Modbus RTU Slave
- Modbus register mapping configured via web interface

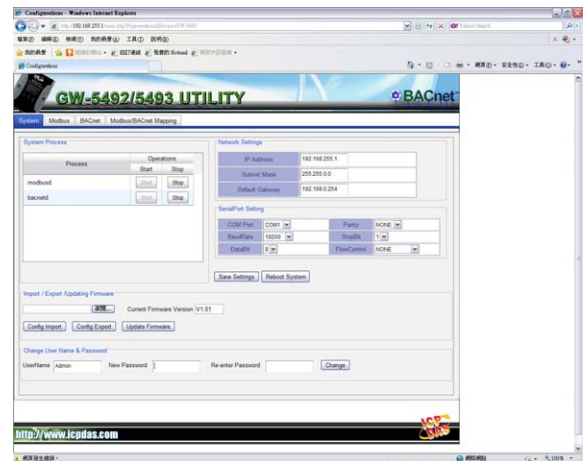
BACnet Support

Objects	Binary Input / Binary Output / Binary Value / Analog Input / Analog Output / Analog Value / Multi-state Input / Multi-state Output / Multi-state Value / Device
BIBBs	DS-RP-B, DS-RPM-B, DS-WP-B, DS-WPM-B, DS-COV-B, DM-DDB-B, DM-DOB-B, DM-DCC-B, DM-TS-B, DM-UTC-B, DM-RD-B

Modbus RTU Support

Function Code	0x01, 0x02, 0x03, 0x04, 0x05, 0x06, 0x10, 0x0F
Baud Rate	2400, 4800, 9600, 19200, 38400, 57600, and 115200 bps

Utility Features



- Configured via standard web browser
- Provide Modbus network configuration interface
- Provide BACnet configuration interface



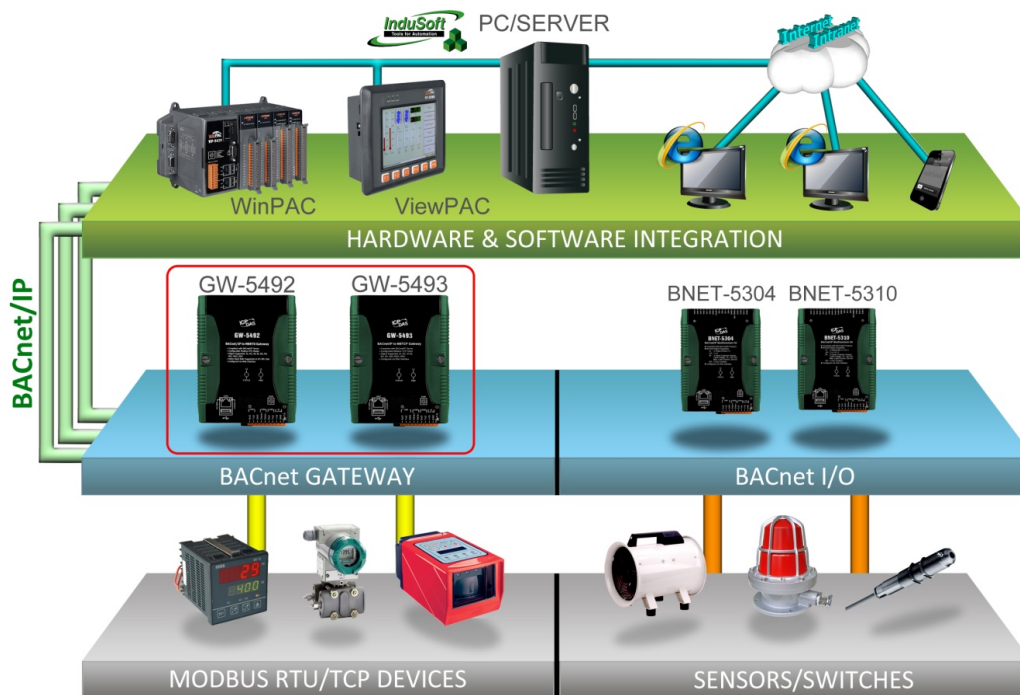
IP SYSTEMES
 8 rue du Colonel Chambonnet – BP67
 69672 BRON Cedex
 Tel. : 04 72 14 18 00
 Fax : 04 72 14 18 01
www.ip-systemes.com – info@ip-systemes.fr



Hardware Specifications

System	
CPU	32-bit
SDRAM	64 MB
Flash	64 MB
EEPROM	16 KB
Communication Ports	
COM1	RS-232 (RxD, TxD, and GND); Non-isolation
COM2	RS-485 (D2+, D2-); 2500 VDC; isolated
Ethernet	10/100Base-TX Ethernet Controller
Protocol	
Modbus	Modbus RTU Master
BACnet	BACnet/IP Server
BACnet Objects	BI, BO, BV, AI, AO, AV, MSI, MSO, MSV (Maximum: 200 each)
BIBBs	DS-RP-B, DS-RPM-B, DS-WP-B, DS-WPM-B, DS-COV-B, DM-DDB-B, DM-DOB-B, DM-DCC-B, DM-TS-B, DM-UTC-B, DM-RD-B
Mechanical	
Dimensions	91mm x 132mm x 52mm(W x L x H)
Installation	DIN-Rail
Environment	
Operating Temp.	-25 ~ +75 °C
Storage Temp.	-30 ~ +85 °C
Humidity	5 ~ 90% RH, non-condensing
Power	
Power Input Range	+10V to +30VDC
Isolation	1 kV
Consumption	4.8 W (0.2 A @ 24 VDC)

Applications



Ordering Information

GW-5492

BACnet/IP to Modbus RTU Gateway