

P6151-V3

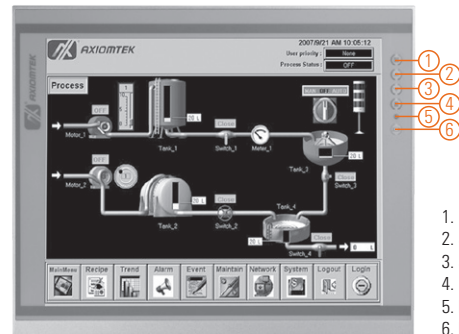
NEW

15" XGA TFT Industrial LCD Monitor



Features

- 15" XGA TFT 420 nits LCD
- Resistive touch
- NEMA 4/12 (IP65) compliant front bezel
- Full range screw-type (locked) AC-in or 24 VDC in (optional)
- HDMI, DisplayPort, and VGA with multi-signal inputs
- Supports panel mount, wall mount, and VESA mount
- Built-in speakers



1. Menu
2. SEL+
3. SEL-
4. Exit
5. Power LED
6. Power switch



▲ Ultra-slim mechanism design

Introduction

The P6151-V3 is an ultra slim industrial LCD monitor, which adopts 15-inch 420 nits XGA LED backlight LCD display and supports multi-signal interfaces including DisplayPort, VGA, and HDMI. Featuring, screw-type adaptor plug design, and 12V/24V DC-in means it is fit for all kinds of industrial environments. With the compact mechanism design, users can enjoy free from space constraint. It is especially suitable for POI/POS, excellent HMI, and all kinds of heavy-duty industrial fields.

Specifications

Front Bezel	NEMA 4/12 (IP65)-compliant and metal front bezel
Mounting	Panel mount, wall mount or VESA arm FPMPLM mounting (video electronics standards association Flat Panel monitor physical mounting interface)
LCD Panel	Display 15" XGA TFT LCD Max. Resolution 1024 x 768 Max. Colors 16.2M Active Area (mm) 304.128 x 228.096 Pixel Pitch (mm) 0.297 x 0.297 Response Time 16ms Backlight LED backlight Backlight MTBF 30,000 hrs Viewing Angle (H/V) 160°/160° Contrast Ratio 800 (TYP.) Brightness (cd/m ²) 420 nits
Display Control	OSD (on screen display)
Input Signal	DisplayPort VGA HDMI Touchscreen: USB interface

Specifications

I/O Connectors	1 x USB for touchscreen version 1 x Audio (Line-in) 1 x VGA 1 x DisplayPort 1 x HDMI 1 x Power input with screw type connector (AC version) 1 x Power input with terminal block (DC version)
Audio	2 x Speaker
Power Supply	AC version: 100 - 240 VAC-DC, 12V3A, 36W power adapter DC version: 24 VDC
Power Consumption	14W
Touchscreen	5-wire resistive touch
Dimensions	377.9 mm (14.88") (W) x 58 mm (2.28") (D) x 309.3 mm (12.18") (H)
Packing Dimensions	520 mm (20.47") (W) x 196 mm (7.71") (D) x 547 mm (21.53") (H)
Weight (net/gross)	3.7 kg (8.15 lb)/5.9 kg (13 lb)
Environment	Operating temperature: 0°C to +50°C (+32°F to +122°F) Relative humidity: 10% to 90% @ +40°C, non-condensing
Packing List	1 x P6151-V3 unit 1 x VGA cable 1 x USB cable for touch 1 x Audio cable 1 x Adapter (AC Version) 1 x 3-pin Terminal block (DC version only)
Certificate	CE

Ordering Information

P6151PR-AC-U-V3 (P/N: E226151116)	15" industrial monitor with resistive touch screen (USB interface), and AC version
P6151PR-DC-U-V3 (P/N: E226151118)	15" industrial monitor with resistive touch screen (USB interface), and DC version

* Other configuration by request

* Specification and certifications may vary based on different requirements

Optional Accessories

59902000030E	US 1.8M power cord
59904000050E	UK 1.83M power cord
59903000080E	EU 1.83M power cord
5946L203800E	HDMI cable
59461713910E	DisplayPort cable
881261510A0E	Panel mount kit
881231770A0E	Wall mount kit
E226171119	Desktop stand

Dimensions

