

P6103W-V3

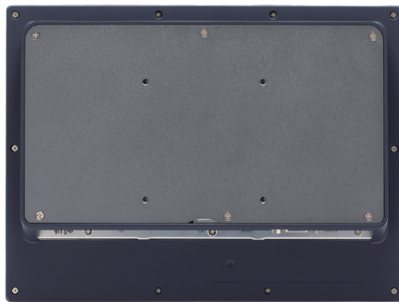
NEW

10.1" WXGA TFT Widescreen Industrial LCD Monitor

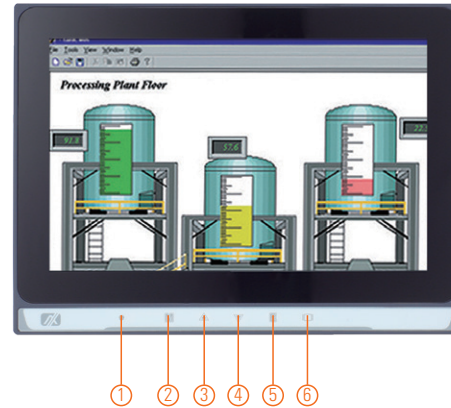


Features

- 10.1" WXGA TFT LED backlight LCD
- Projected capacitive multi-touch
- NEMA 4/12 (IP65) compliant flat panel monitor
- Supports panel mount, wall mount, and VESA arm
- Full range screw-type (locked) AC-in
- DP, VGA, and HDMI with multi-signal inputs



▲ Rear view



1. Power LED
2. Menu
3. SEL+
4. SEL-
5. Exit
6. Power switch



7. 12 VDC power input
8. USB touch interface
9. DisplayPort
10. HDMI
11. VGA
12. Audio (Line-in)

Introduction

The P6103W-V3 is an ultra slim industrial LCD monitor, which adopts 10.1-inch 350 nits WXGA LED backlight LCD display and supports multi-signal interfaces including DisplayPort, VGA, and HDMI. It features NEMA 4/12 and IP65 compliant front bezel, screw-type adaptor plug design. Moreover, the P6103W-V3 supports panel mount, wall mount or VESA FPMPMI (Video Electronics Standards Association Flat Panel Monitor Physical Mounting Interface) mounting. With the compact mechanism design, users can enjoy free from space constraint. It is especially suitable for POI/POS, excellent HMI, and all kinds of heavy-duty industrial fields.

Specifications

Front Bezel	NEMA 4/12 (IP65)-compliant and metal front bezel	
Mounting	Panel mount, wall mount or VESA arm FPMPMI mounting (video electronics standards association flat panel monitor physical mounting interface)	
LCD Panel	Display	10.1" WXGA TFT LCD
	Max. Resolution	1280 x 800
	Max. Colors	16.7M
	Active Area (mm)	216.96 x 135.60
	Pixel Pitch (mm)	0.1695 x 0.1695
	Response Time	25ms
	Backlight	LED backlight
	Backlight MTBF	30,000 hrs
	Viewing Angle (H/V)	170°/170°
	Contrast Ratio	800 (TYP.)
Brightness (cd/m ²)	350 nits	
Display Control	OSD (on screen display)	
Input Signal	DisplayPort	
	VGA	
	HDMI	
	Touchscreen: USB interface	

Specifications

I/O Connectors	1 x USB for touchscreen version 1 x Audio (Line-in) 1 x VGA 1 x DisplayPort 1 x HDMI 1 x Power input with screw type connector
Power Adapter	AC version: 100 - 240 VAC-DC, 12V3A, 36W power adapter
Power Consumption	12W
Touchscreen	Projected capacitive touch
Dimensions	260.8 mm (10.27") (W) x 38 mm (1.5") (D) x 194.1 mm (7.64") (H)
Packing Dimensions	415 mm (16.33") (W) x 99 mm (3.9") (D) x 313 mm (12.32") (H)
Weight (net/gross)	1.036 kg (2.28 lbs)/1.6 kg(3.53 lbs)
Environment	Operating temperature: 0°C to +50°C (+32°F to +122°F) Relative humidity: 10% to 90% @ +40°C, non-condensing
Packing List	1 x P6103W-V3 unit 1 x VGA cable 1 x USB cable for touch 1 x Audio cable 1 x Adapter (AC version only)
Certificate	CE

Ordering Information

P6103WPC-AC-U-V3 (P/N: E226103105)	10.1" industrial monitor with capacitive touch screen and AC version
---------------------------------------	--

*Other configuration by request
*Specification and certifications may vary based on different requirements

Optional Accessories

5946L203800E	HDMI cable
59461713910E	DisplayPort cable
82251030100E	Panel mount kit
82238460050E	Wall mount kit
E226171119	Desktop stand



IP SYSTEMES

8 rue du Colonel Chambonnet – BP67

69672 BRON Cedex

Tel : 04 72 14 18 00

Fax : 04 72 14 18 01

www.ip-systemes.com – info@ip-systemes.fr

Dimensions

